

Anti-pCREB [S133] (87G3)-165Ho

Pathologist-Verified Clone for Imaging Mass Cytometry™

Catalog number: 3165034D

Package size and concentration: 25 µg, 0.5 mg/mL

Clone: 87G3

Isotype: Rabbit IgG

Pathologist-verified on: Human FFPE

Fluidigm tested on: Human FFPE, Mouse FFPE

Reported reactivity: Human, Mouse, Rat

Formulation: Antibody stabilizer with 0.05% sodium azide

Storage: Store at 4 °C. Do not freeze.

Application: IMC paraffin

Technical Information

Description: CREB is a 43 kDa leucine zipper transcription factor that belongs to the CREB/ATF family. CREB regulates proliferation, differentiation, and survival in diverse cell types, including cells of neuronal and hematopoietic origin. The serine 133 residue within the kinase-inducible domain (KID) is phosphorylated by various kinases. This phosphorylation promotes the interaction of CREB with various transcriptional co-activators, in particular the histone acetyltransferases CREB-binding protein (CBP) and p300. Phosphorylation of CREB occurs in response to stimuli including growth factors, neurotransmitters, and stress signals that increase intracellular cAMP or calcium levels. When activated, CREB binds to cAMP response elements, thereby initiating transcription of CREB target genes. The 87G3 antibody reacts with CREB phosphorylated at the serine 133 residue.

Application: The metal-tagged antibody is designed and formulated for the application of Imaging Mass Cytometry™ (IMC™) using the Fluidigm Hyperion™ Imaging System on formalin-fixed, paraffin-embedded (FFPE) tissue sections.

Quality control: Each lot of conjugated antibody is quality control- tested by Imaging Mass Cytometry on tissue sections

Recommended concentration: For optimal performance it is recommended that the antibody be titrated for the desired application. Suggested initial dilution range: IMC-Paraffin: 1:25 to 1:100

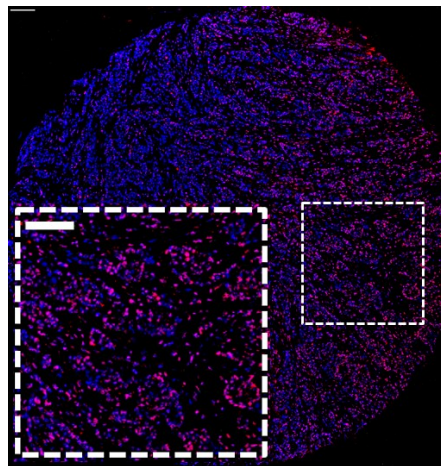
References

Chang, Q. et al. "Staining of frozen and formalin-fixed, paraffin-embedded tissues with metal-labeled antibodies for Imaging Mass Cytometry analysis." *Current Protocols in Cytometry* 82 (2017): 12.47.1–12.47.8.

Giesen, C. et al. "Highly multiplexed imaging of tumor tissues with subcellular resolution by mass cytometry." *Nature Methods* 11 (2014): 417–22.

Safety

Use standard laboratory safety protocols. Read and understand the safety data sheets (SDSs) before handling chemicals. To obtain SDSs, go to fluidigm.com/sds and search for the SDS using either the product name or the part number.



Human breast carcinoma (FFPE) stained with 165Ho-anti-phospho-CREB [Ser133] (87G3) at a dilution of 1:50 (red pseudocolor) and iridium DNA intercalator (blue pseudocolor). Heat-mediated antigen retrieval was performed using Tris/EDTA buffer pH 9.

Scale bar size = 100 µm.

For technical support visit techsupport.fluidigm.com. | For general support visit fluidigm.com/support.

For Research Use Only. Not for use in diagnostic procedures.

This product contains antibodies manufactured by and sold under license from CST™ and licensees thereof.

Information in this publication is subject to change without notice. **Limited Use Label License:** The purchase of this Fluidigm Instrument and/or Consumable product conveys to the purchaser the limited, nontransferable right to use with only Fluidigm Consumables and/or Instruments respectively except as approved in writing by Fluidigm. **Patent and license information:** fluidigm.com/legal/notices. **Trademarks:** Fluidigm, the Fluidigm logo, Hyperion, Imaging Mass Cytometry, and IMC are trademarks and/or registered trademarks of Fluidigm Corporation in the United States and/or other countries. All other trademarks are the sole property of their respective owners. © 2020 Fluidigm Corporation. All rights reserved. 04-2020