

# Anti-Beta Tubulin (BT7R)-159Tb

## Pathologist-Verified Clone for Imaging Mass Cytometry™

**Catalog number:** 3159036D

**Package size and concentration:** 25 µg, 0.5 mg/mL

**Clone:** BT7R

**Isotype:** Mouse IgG2

**Pathologist-verified on:** Human FFPE

**Fluidigm tested on:** Human FFPE, Mouse FFPE

**Reported reactivity:** Human, Mouse, Rat, Rabbit, Dog, Chicken, Non-Human Primate

**Formulation:** Antibody stabilizer with 0.05% sodium azide

**Storage:** Store at 4 °C. Do not freeze.

**Application:** IMC paraffin

## Technical Information

**Description:** Beta-tubulin is a 55 kDa subunit of tubulin that polymerizes with alpha-tubulin into microtubules, the major cytoskeletal elements found in all eukaryotic cells. Microtubules play key roles in chromosome segregation in mitosis, intracellular transport, ciliary and flagellar bending, and structural support of the cytoskeleton.

**Application:** The metal-tagged antibody is designed and formulated for the application of Imaging Mass Cytometry™ (IMC™) using the Fluidigm Hyperion™ Imaging System on formalin-fixed, paraffin-embedded (FFPE) tissue sections.

**Quality control:** Each lot of conjugated antibody is quality control- tested by Imaging Mass Cytometry on tissue sections

**Recommended concentration:** For optimal performance it is recommended that the antibody be titrated for the desired application. Suggested initial dilution range: IMC-Paraffin: 1:50 to 1:200

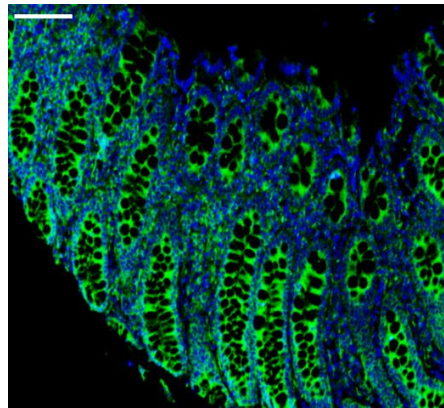
## References

Chang, Q. et al. "Staining of frozen and formalin-fixed, paraffin-embedded tissues with metal-labeled antibodies for Imaging Mass Cytometry analysis." *Current Protocols in Cytometry* 82 (2017): 12.47.1–12.47.8.

Giesen, C. et al. "Highly multiplexed imaging of tumor tissues with subcellular resolution by mass cytometry." *Nature Methods* 11 (2014): 417–22.

## Safety

Use standard laboratory safety protocols. Read and understand the safety data sheets (SDSs) before handling chemicals. To obtain SDSs, go to [fluidigm.com/sds](http://fluidigm.com/sds) and search for the SDS using either the product name or the part number.



Human colon (FFPE) stained with 159Tb-anti-β-Tubulin (BT7R) at a dilution of 1:100 (green pseudocolor) and iridium DNA intercalator (blue pseudocolor). Heat-mediated antigen retrieval was performed using Tris/EDTA buffer pH 9. Scale bar size = 100 µm.

**For technical support visit [techsupport.fluidigm.com](http://techsupport.fluidigm.com). | For general support visit [fluidigm.com/support](http://fluidigm.com/support).**

**For Research Use Only. Not for use in diagnostic procedures.**

This product contains antibodies manufactured by and sold under license from BioLegend® and licensees thereof.

Information in this publication is subject to change without notice. **Limited Use Label License:** The purchase of this Fluidigm Instrument and/or Consumable product conveys to the purchaser the limited, nontransferable right to use with only Fluidigm Consumables and/or Instruments respectively except as approved in writing by Fluidigm. **Patent and license information:** [fluidigm.com/legal/notices](http://fluidigm.com/legal/notices). **Trademarks:** Fluidigm, the Fluidigm logo, Hyperion, Imaging Mass Cytometry, and IMC are trademarks and/or registered trademarks of Fluidigm Corporation in the United States and/or other countries. All other trademarks are the sole property of their respective owners. © 2020 Fluidigm Corporation. All rights reserved. 24-Apr-2020