

Anti-Human CCR10-164Dy

Catalog: 3164019A

Clone: 314305

Package Size: 50 tests

Isotype: IgG2a

Storage: Store product at 4°C. Do not freeze.

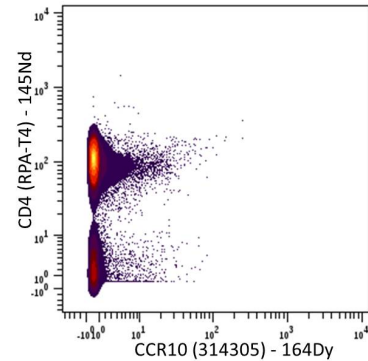
Formulation: Antibody stabilizer with 0.05% Sodium Azide

Reactivity: Human

Technical Information

Validation: Each lot of conjugated antibody is quality control tested by CyTOF[®] analysis of stained cells using the appropriate positive and negative cell staining and/or activation controls.

Recommended Usage: The suggested use is 1 µl for up to 3 X 10⁶ live cells in 100 µl. It is recommended that the antibody be titrated for optimal performance for each of the desired applications.



Human PBMCs stained with 145Nd-anti-CD4 (RPA-T4) and 164Dy-anti-CCR10 (314305).

Description

CCR10 is a 38 kDa GPCR that was originally identified as the receptor for CCL27 which is selectively expressed by epidermal keratinocytes. Accordingly, CCR10 has been shown to be expressed by skin homing effector/memory T cells expressing cutaneous lymphocyte Ag (CLA). Subsequently, another ligand of CCR10 was identified and termed CCL28, which is widely expressed by the epithelial cells of various mucosal tissues. In addition, IgA-producing B cells generated in mucosa-associated lymphoid tissues express CCR10 for their migration and maintenance at mucosal sites. Increasing evidence also found that CCR10/ligands are involved in regulation of other immune cells in epithelial immunity.

References

Bandura, D. R., et al. Mass Cytometry: Technique for Real Time Single Cell Multitarget Immunoassay Based on Inductively Coupled Plasma Time-of-Flight Mass Spectrometry. *Analytical Chemistry* 81:6813-6822, 2009.

Ornatsky, O. I., et al. **Highly Multiparametric Analysis by Mass Cytometry.** *J Immunol Methods* 361 (1-2):1-20, 2010.

For technical support visit fluidigm.com/support

EMAIL **United States and other countries not in Europe or Asia** techsupport@fluidigm.com | **Europe** techsupporteurope@fluidigm.com | **Asia** techsupportasia@fluidigm.com
 PHONE **United States (toll-free)** +1 866 358 4354 | **Europe** +33 1 60 92 42 40 | **Japan** +81 3 3662 2150 | **China** +86 21 3255 8368 | **All other countries** +1 650 266 6100

For Research Use Only. Not for use in diagnostic procedures.

Information in this publication is subject to change without notice. **Safety data sheet information** fluidigm.com/sds | **Patent and license information** fluidigm.com/legalnotices | Fluidigm, the Fluidigm logo, and CyTOF are trademarks or registered trademarks of Fluidigm Corporation in the United States and/or other countries. © 2015 Fluidigm Corporation. All rights reserved. 01/2015