

# Anti-Human CD25/IL2Ra-175Lu

## Pathologist-Verified Clone for Imaging Mass Cytometry™

Catalog: 3175036D

Package size and concentration: 25 µg, 0.5 mg/mL

Storage: Store at 4 °C. Do not freeze.

Reactivity: Human

Clone: EPR6452

Isotype: Rabbit IgG

Formulation: Antibody stabilizer with 0.05% sodium azide

Application: IMC-Paraffin

## Technical Information

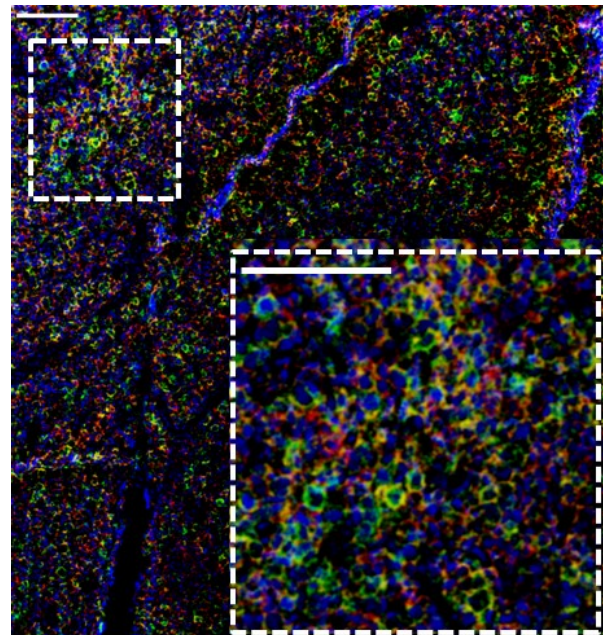
**Application:** The metal-tagged antibody is designed and formulated for the application of Imaging Mass Cytometry (IMC™) using the Fluidigm Hyperion™ Imaging System on formalin-fixed, paraffin-embedded (FFPE) tissue sections.

**Quality control:** Each lot of conjugated antibody is quality control-tested by Imaging Mass Cytometry on tissue sections.

**Recommended concentration:** For optimal performance it is recommended that the antibody be titrated for the desired application. Suggested initial dilution range:  
 IMC-Paraffin: 1:25 to 1:100

## Description

CD25, a glycoprotein known as the low-affinity interleukin 2 receptor (IL-2R), enables T cells to respond to the growth-promoting cytokine IL-2. It is expressed on regulatory and activated T cells, activated B cells, macrophages and monocytes.



Human adult T cell lymphoma (FFPE) stained with 175Lu-anti-CD25 (EPR6452) at a dilution of 1:50 (green pseudocolor), 156Gd-anti-CD4 (EPR6855) (red pseudocolor), and iridium DNA intercalator (blue pseudocolor). Heat-mediated antigen retrieval was performed using Tris/EDTA buffer pH 9. Scale bar size = 100 µm.

## References

Chang, Q. et al. "Staining of frozen and formalin-fixed, paraffin-embedded tissues with metal-labeled antibodies for imaging mass cytometry analysis." *Current Protocols in Cytometry* 82 (2017): 12.47.1–12.47.8.

Giesen, C. et al. "Highly multiplexed imaging of tumor tissues with subcellular resolution by mass cytometry." *Nature Methods* 11 (2014): 417–22.

For technical support visit <http://techsupport.fluidigm.com>. | For general support visit [www.fluidigm.com/support](http://www.fluidigm.com/support).

**For Research Use Only. Not for use in diagnostic procedures.**

Information in this publication is subject to change without notice. **Safety data sheet information:** [www.fluidigm.com/sds](http://www.fluidigm.com/sds). **Patent and license information:** [www.fluidigm.com/legalnotices](http://www.fluidigm.com/legalnotices). **Limited Use Label License:** The purchase of this product conveys to the purchaser the limited, non-transferable right to use the purchased consumable or reagent only with Fluidigm Instruments and Systems. **EU's WEEE directive information:** [www.fluidigm.com/compliance](http://www.fluidigm.com/compliance). Fluidigm, the Fluidigm logo, Hyperion, Imaging Mass Cytometry, and IMC are trademarks and/or registered trademarks of Fluidigm Corporation in the United States and/or other countries. © 2018 Fluidigm Corporation. All rights reserved. 02/2018