

# Anti-Human CD270/HVEM-144Nd

Catalog: 3144022B

Clone: 122

Package Size: 100 tests

Isotype: IgG1

Storage: Store product at 4°C. Do not freeze.

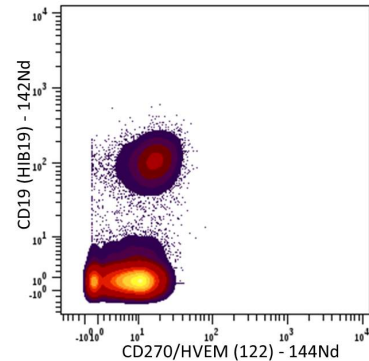
Formulation: Antibody stabilizer with 0.05% Sodium Azide

Reactivity: Human,

## Technical Information

**Validation:** Each lot of conjugated antibody is quality control tested by CyTOF® analysis of stained cells using the appropriate positive and negative cell staining and/or activation controls.

**Recommended Usage:** The suggested use is 1 µl for up to 3 X 10<sup>6</sup> live cells in 100 µl. It is recommended that the antibody be titrated for optimal performance for each of the desired applications.



Human PBMCs stained with 142Nd-anti-CD19 (HIB19) and 144Nd-anti-CD270/HVEM (122). Lymphocytes are displayed in the analysis.

## Description

HVEM is a protein of the TNFR superfamily that serves as a shared ligand for costimulatory and coinhibitory receptors. HVEM was named for the ability of Types I and II herpesvirus gD to bind to it for viral entry into the cell. HVEM not only interacts with viral gD proteins, but also binds receptors in the Ig superfamily, including BTLA and CD160, and receptors in the TNF superfamily, including LIGHT and LTA. Ligation of HVEM on T cells by membrane-bound LIGHT delivers positive signals through HVEM, whereas engagement of BTLA/CD160 by HVEM provides negative signals to T cells via BTLA/CD160. HVEM receptor expression is distributed widely on hematopoietic and non-hematopoietic cells. Besides T and B cells, HVEM is expressed on dendritic cells, monocytes, neutrophils, NK cells and non-hematopoietic cells including parenchymal cells.

## References

Bandura, D. R., et al. Mass Cytometry: Technique for Real Time Single Cell Multitarget Immunoassay Based on Inductively Coupled Plasma Time-of-Flight Mass Spectrometry. *Analytical Chemistry* 81:6813-6822, 2009.

Ornatsky, O. I., et al. **Highly Multiparametric Analysis by Mass Cytometry.** *J Immunol Methods* 361 (1-2):1-20, 2010.

### For technical support visit [fluidigm.com/support](http://fluidigm.com/support)

**North America** +1 650 266 6100 | Toll-free: +1 866 358 4354 in the US | [support.northamerica@fluidigm.com](mailto:support.northamerica@fluidigm.com) **Europe** +33 1 60 92 42 40 | [support.europe@fluidigm.com](mailto:support.europe@fluidigm.com)

**China (excluding Hong Kong)** +86 21 3255 8368 | [techsupportchina@fluidigm.com](mailto:techsupportchina@fluidigm.com) **Japan** +81 3 3662 2150 | [techsupportjapan@fluidigm.com](mailto:techsupportjapan@fluidigm.com)

**All other Asian countries** +1 650 266 6100 | [techsupportasia@fluidigm.com](mailto:techsupportasia@fluidigm.com) **Central and South America** +1 650 266 6100 | [techsupportlatam@fluidigm.com](mailto:techsupportlatam@fluidigm.com)

### For Research Use Only. Not for use in diagnostic procedures.

This product contains antibodies manufactured by and sold under license from BioLegend and licensees thereof.

Information in this publication is subject to change without notice. **Safety data sheet information** [fluidigm.com/sds](http://fluidigm.com/sds) **Patent and license information** [fluidigm.com/legalnotices](http://fluidigm.com/legalnotices) | Fluidigm, the Fluidigm logo, and CyTOF are trademarks or registered trademarks of Fluidigm Corporation in the United States and/or other countries. © 2015 Fluidigm Corporation. All rights reserved. 07/2015