

Anti-Human Ki-67-172Yb

Catalog: 3172024B

Package Size: 100 tests

Storage: Store product at 4°C. Do not freeze.

Reactivity: Rat, Mouse, Human, Porcine

Clone: B56

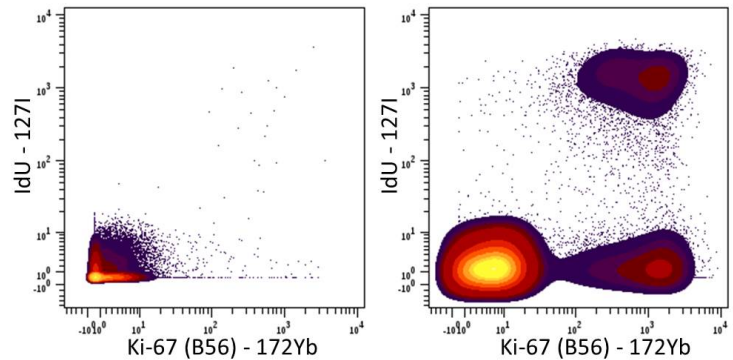
Isotype: IgG1

Formulation: Antibody stabilizer with 0.05% Sodium Azide

Technical Information

Validation: Each lot of conjugated antibody is quality control tested by CyTOF[®] analysis of stained cells using the appropriate positive and negative cell staining and/or activation controls.

Recommended Usage: The suggested use is 1 µl for up to 3 X 10⁶ live cells in 100 µl. It is recommended that the antibody be titrated for optimal performance for each of the desired applications.



Human PBMCs were incubated for 3 days in media alone (left) or with PHA (right). Cells were then stained with IdU-1271, and then fixed, permeabilized, and stained with 172Yb-anti-Ki-67 (B56). Total viable cells are displayed in the analysis.

Description

Ki-67 protein, also known as MKI67, is a nuclear protein that is associated with cellular proliferation. Ki-67 protein is expressed in all cell types, is present during active phases of the cell cycle (G1, S, G2 and Mitosis) and not during the resting phase G0. Because of this, Ki-67 is an excellent marker for determining the fraction of proliferating cells within a given population of cells.

References

Bandura, D. R., et al. Mass Cytometry: Technique for Real Time Single Cell Multitarget Immunoassay Based on Inductively Coupled Plasma Time-of-Flight Mass Spectrometry. *Analytical Chemistry* 81:6813-6822, 2009.

Behbehani, G.K., et al. Single-cell mass cytometry adapted to measurements of the cell cycle. *Cytometry A* 81 (7): 552-566, 2012.

Ornatsky, O. I., et al. **Highly Multiparametric Analysis by Mass Cytometry.** *J Immunol Methods* 361 (1-2):1-20, 2010.

For technical support visit fluidigm.com/support

EMAIL **United States and other countries not in Europe or Asia** techsupport@fluidigm.com **Europe** techsupport@fluidigm.com | **Asia** techsupportasia@fluidigm.com
 PHONE **United States (toll-free)** +1 866 358 4354 | **Europe** +33 1 60 92 42 40 | **Japan** +81 3 3662 2150 | **China** +86 21 3255 8368 | **All other countries** +1 650 266 6100

For Research Use Only. Not for use in diagnostic procedures.

Information in this publication is subject to change without notice. **Safety data sheet information** fluidigm.com/sds **Patent and license information** fluidigm.com/legalnotices | Fluidigm, the Fluidigm logo, and CyTOF are trademarks or registered trademarks of Fluidigm Corporation in the United States and/or other countries. © 2015 Fluidigm Corporation. All rights reserved. 01/2015