

Anti-E-Cadherin (24E10)-158Gd

Pathologist-Verified Clone for Imaging Mass Cytometry™

Catalog number: 3158029D

Package size and concentration: 25 µg, 0.5 mg/mL

Clone: 24E10

Isotype: Rabbit IgG

Pathologist-verified on: Human FFPE, Human Frozen

Fluidigm tested on: Human FFPE, Human Frozen, Mouse FFPE

Reported reactivity: Human, Mouse, Bovine, Cross

Formulation: Antibody stabilizer with 0.05% sodium azide

Storage: Store at 4 °C. Do not freeze.

Application: IMC paraffin, IMC frozen

Technical Information

Description: CD324, also known as epithelial cadherin (E-cadherin) or uvomorulin, is a member of the cadherin superfamily. E-cadherin is a calcium-dependent, transmembrane cell-to-cell adhesion glycoprotein composed of 4 extracellular cadherin repeats and a highly conserved cytoplasmic tail region. It functions as a cell adhesion molecule involved in development, bacterial pathogenesis, and tumor invasion. E-cadherin is widely expressed in epithelial cells in the colon, uterus, liver, keratinocytes, brain, heart, muscle, kidney, and pancreas as well as in erythroid cells.

Application: The metal-tagged antibody is designed and formulated for the application of Imaging Mass Cytometry™ (IMC™) using the Fluidigm Hyperion™ Imaging System on formalin-fixed, paraffin-embedded (FFPE) tissue sections, and frozen tissue sections.

Quality control: Each lot of conjugated antibody is quality control- tested by Imaging Mass Cytometry on tissue sections

Recommended concentration: For optimal performance it is recommended that the antibody be titrated for the desired application. Suggested initial dilution range: IMC-Paraffin: 1:25 to 1:100
IMC-Frozen: 1:100 to 1:400

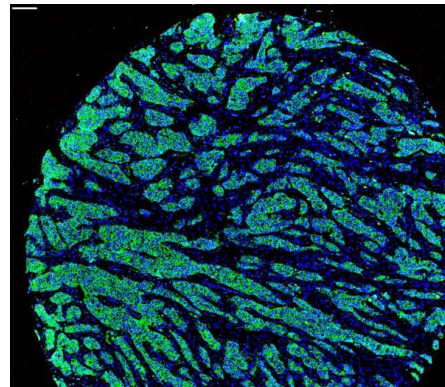
References

Chang, Q. et al. "Staining of frozen and formalin-fixed, paraffin-embedded tissues with metal-labeled antibodies for Imaging Mass Cytometry analysis." *Current Protocols in Cytometry* 82 (2017): 12.47.1–12.47.8.

Giesen, C. et al. "Highly multiplexed imaging of tumor tissues with subcellular resolution by mass cytometry." *Nature Methods* 11 (2014): 417–22.

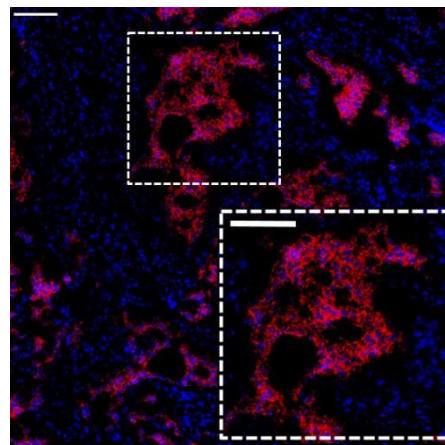
Safety

Use standard laboratory safety protocols. Read and understand the safety data sheets (SDSs) before handling chemicals. To obtain SDSs, go to fluidigm.com/sds and search for the SDS using either the product name or the part number.



Human breast carcinoma (FFPE) stained with 158Gd-anti-E-cadherin (24E10) at a dilution of 1:50 (green pseudocolor) and iridium DNA intercalator (blue pseudocolor). Heat-mediated antigen retrieval was performed using Tris/EDTA buffer pH 9.

Scale bar size = 100 µm.



Human frozen breast tumor stained with 158Gd-anti-E-cadherin (24E10) at a dilution of 1:200 (red pseudocolor) and iridium DNA intercalator (blue pseudocolor). Tissue section was fixed in 4% paraformaldehyde for 30 minutes at 4 °C.

Scale bar size = 100 µm.

For technical support visit techsupport.fluidigm.com. | For general support visit fluidigm.com/support.

For Research Use Only. Not for use in diagnostic procedures.

This product contains antibodies manufactured by and sold under license from CST™ and licensees thereof.

Information in this publication is subject to change without notice. **Limited Use Label License:** The purchase of this Fluidigm Instrument and/or Consumable product conveys to the purchaser the limited, nontransferable right to use with only Fluidigm Consumables and/or Instruments respectively except as approved in writing by Fluidigm. **Patent and license information:** fluidigm.com/legal/notices. **Trademarks:** Fluidigm, the Fluidigm logo, Hyperion, Imaging Mass Cytometry, and IMC are trademarks and/or registered trademarks of Fluidigm Corporation in the United States and/or other countries. All other trademarks are the sole property of their respective owners. © 2020 Fluidigm Corporation. All rights reserved. 24-Apr-2020