

# Delta Gene Assays

Custom primer design for high-throughput gene expression

- **Sensitivity and linearity similar to probe-based assays**
- **MIQE\* compliant**
- **Assay primer sequences provided**
- **Amplicons designed to minimize amplification of genomic DNA**
- **Assays designed to any RefSeq ID including human, mouse, rat, rhesus, and many others**
- **C1 compatible single-cell gene expression protocols available**
- **Sufficient for 100 Fluidigm 96.96 Dynamic Array IFCs**

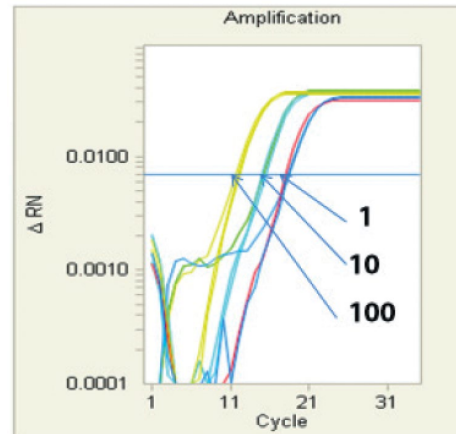
\* Minimum Information for Publication of Quantitative Real-Time PCR Experiments

## GET LINEAR

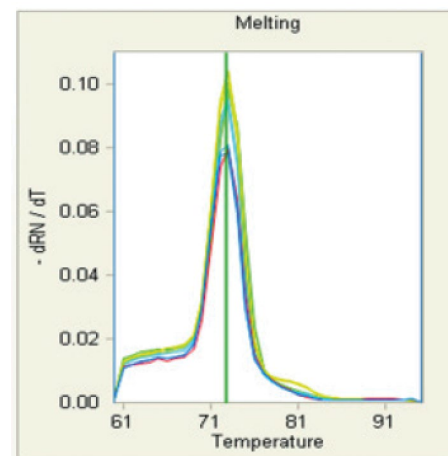
Fluidigm® DELTAgene™ Assays are high-quality qPCR gene expression assays. They permit you to take full advantage of your BioMark™ HD System, EvaGreen® second generation dsDNA binding dye, and fully supported protocols minimizing experiment setup time while providing quality results.

Flexible groups of biologically related genes are available for your specific requirements; there is no need to use fixed content. Simply provide us with your genes of interest (RefSeq IDs) and the target species. All assays are ready-to-use with Fluidigm standard protocols. Assays are offered with or without wet-lab testing.

$C_q$  difference between 1, 10 and 100 cells easily distinguished



Single  $T_m$  Peak



Example data: 1, 10 and 100 cell, custom EvaGreen® assay linearity data (triplicates shown)

## Workflow

<b>1</b>	<b>2</b>	<b>3</b>	<b>4</b>	<b>5</b>
<b>Assay Design</b>	<b>Prime</b>	<b>Load</b>	<b>Run</b>	<b>Analyze</b>
Design the Fluidigm Delta Gene™ Assays to any RefSeq ID.	Prime the IFC to prepare for samples and assays.	Place the IFC on the IFC Controller to automatically set up the reaction.	Place the IFC on the Biomark HD System for thermal cycling and fluorescence detection.	Use Fluidigm Real-Time PCR Analysis software to view and to interact with amplification curves, colorcoded heat maps, and C <sub>q</sub> data.

### ORDERING INFORMATION

Product	PN
Delta Gene assays (wet tested)*	ASY-GE-WET
Delta Gene assays (not wet tested)	ASY-GE

\*Human and mouse only

Biologically grouped assays are available for selection to build panels of your choice. Visit [fluidigm.com](http://fluidigm.com) for more details.

### FLUIDIGM SOLUTION FOR GENE EXPRESSION

- **Delta Gene assays**  
Custom assays designed for the Biomark HD system
- **Dynamic Array IFCs**  
Consumable IFCs for high-throughput gene expression analysis
- **IFC controller**  
IFC Controller for priming and loading Dynamic Array IFCs
- **FC1 cycler**  
FC1 Cycler for performing PCR in the Access Array IFCs
- **Biomark™ HD system**  
Integrated hardware/software for gene expression, genotyping and digital PCR using IFCs
- **Fluidigm Real-Time PCR Analysis Software**  
Analysis software for gene expression analysis, and automatic incorporation of C<sub>q</sub>

#### Corporate headquarters

7000 Shoreline Court, Suite 100  
South San Francisco, CA 94080 USA  
Toll-free: 866 359 4354 | Fax: 650 871 7152  
[fluidigm.com](http://fluidigm.com)

#### Sales

North America | +1 650 266 6170 | [info-us@fluidigm.com](mailto:info-us@fluidigm.com)  
Europe/EMEA | +33 (0)1 60 92 42 40 | [info-europe@fluidigm.com](mailto:info-europe@fluidigm.com)  
Japan | +81 (0)3 3662 2150 | [info-japan@fluidigm.com](mailto:info-japan@fluidigm.com)  
China (excluding Hong Kong) | +86 (0)21 3255 8368 | [info-china@fluidigm.com](mailto:info-china@fluidigm.com)  
Asia | +1 650 266 6000 | [info-asia@fluidigm.com](mailto:info-asia@fluidigm.com)  
Latin America | +1 650 266 6000 | [info-latinamerica@fluidigm.com](mailto:info-latinamerica@fluidigm.com)

©2014 Fluidigm Corporation. All rights reserved. Fluidigm, the Fluidigm logo, Delta Gene, Biomark, Dynamic Array, Digital Array, and FC1 are trademarks or registered trademarks of Fluidigm Corporation in the United States and/or other countries. All other trademarks are the property of their respective owners.

**For Research Use Only. Not for use in diagnostic procedures.** PN 100-3035 C1